



# **Pulse Memorial**

## Design Control

## Document Workshop

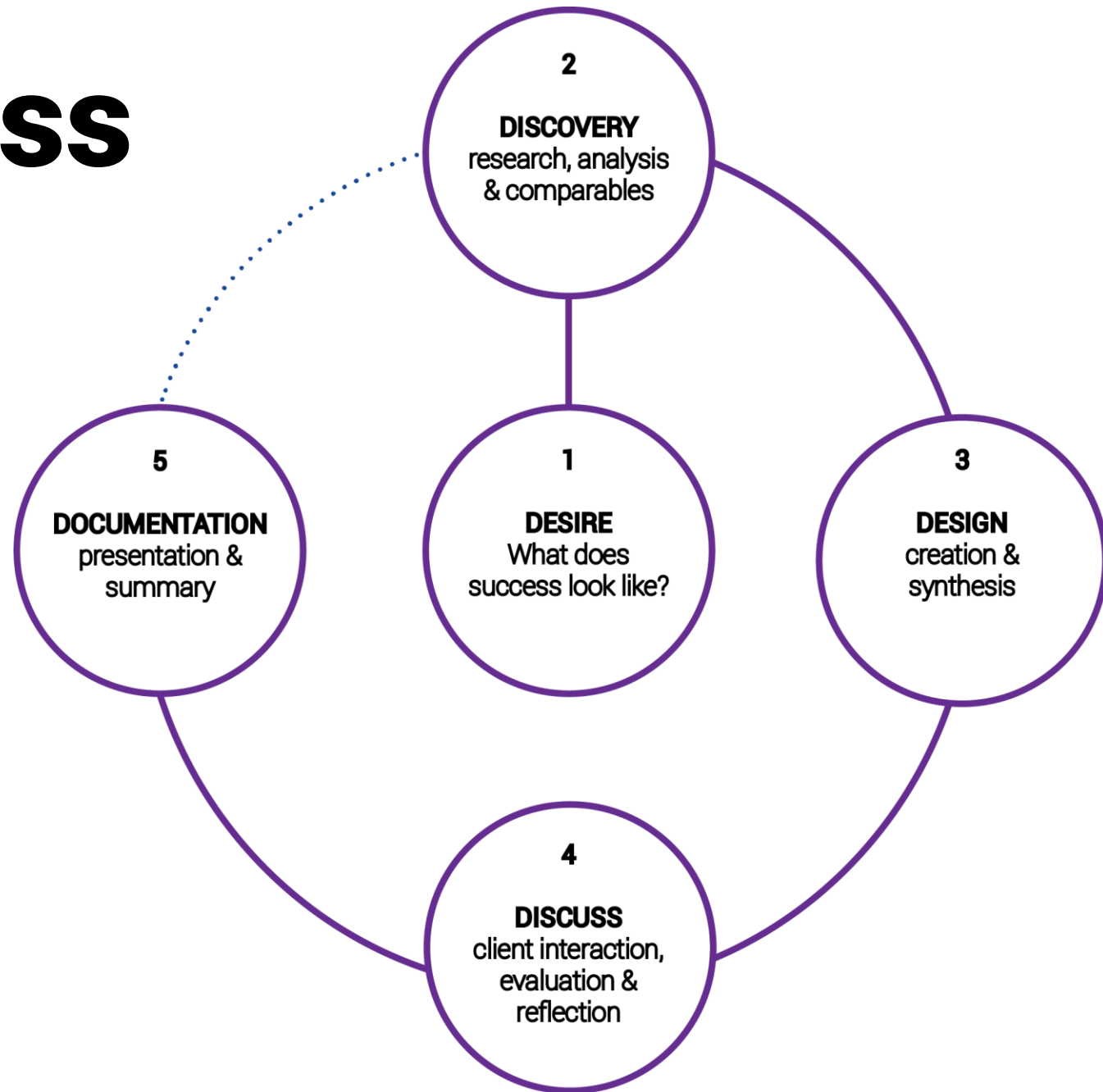
February 4, 2025



# Agenda

- ▶ Review where we are in the **Process**
- ▶ Review **Design Control Document Framework**
- ▶ Provide Input on a few **Design options**
- ▶ Receive Committee **Input on Design Control Document**
- ▶ Next Steps

# Design Process



# Desire

## Your Thoughts on the Memorial's Mission

Sanctuary, tranquility, healing, reflection, contemplation

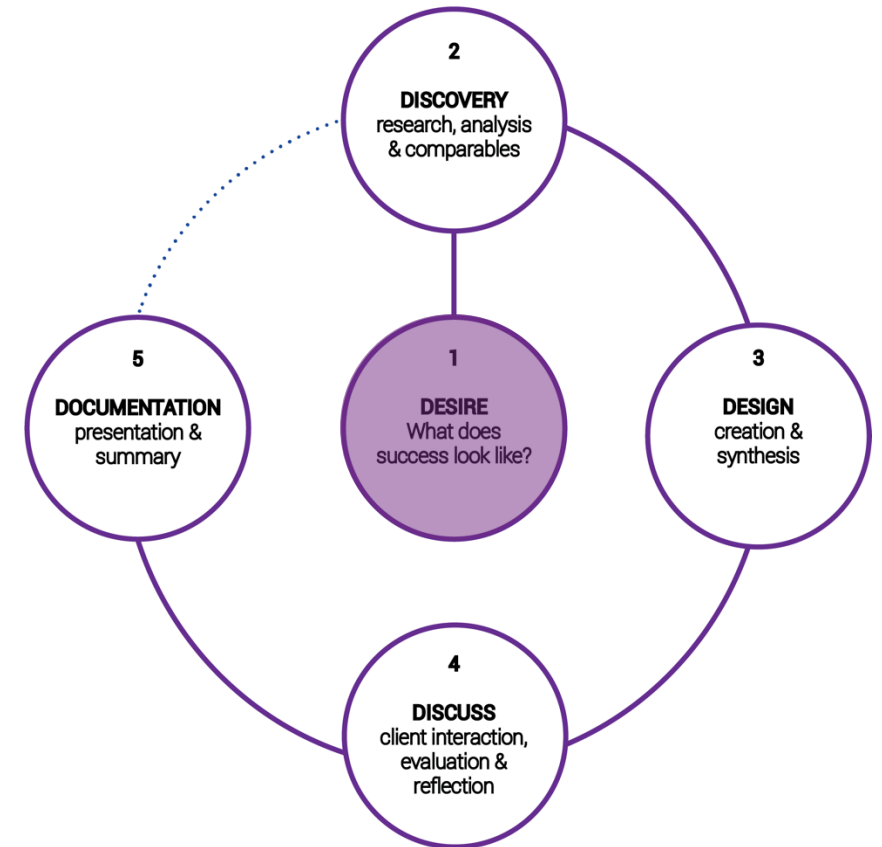
Remember the 49 whose lives were taken in a culturally and linguistically sensitive way, recognizing their identities from multiple backgrounds and sexual orientations (esp LGBTQIA+)

Educate on impact of Pulse on community and world

Love, hope, and acceptance

Resilience, moving forward through adversity

Voice for those affected (survivors, first responders) Honor and celebrate the lives that were brutally taken on June 12, 2016



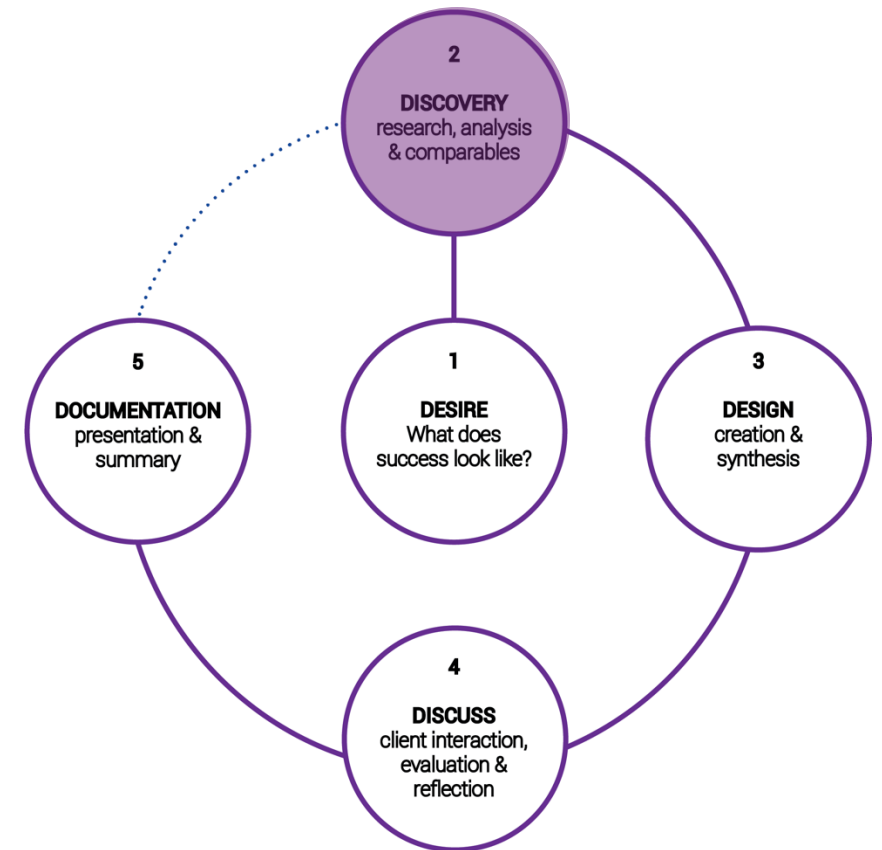


# Discovery

## Site Analysis/Opportunities and Constraints

Examined potential **Design Elements** Based on the Surveys that Committee members completed

Measured **Preferences** of PMAC related to design element images

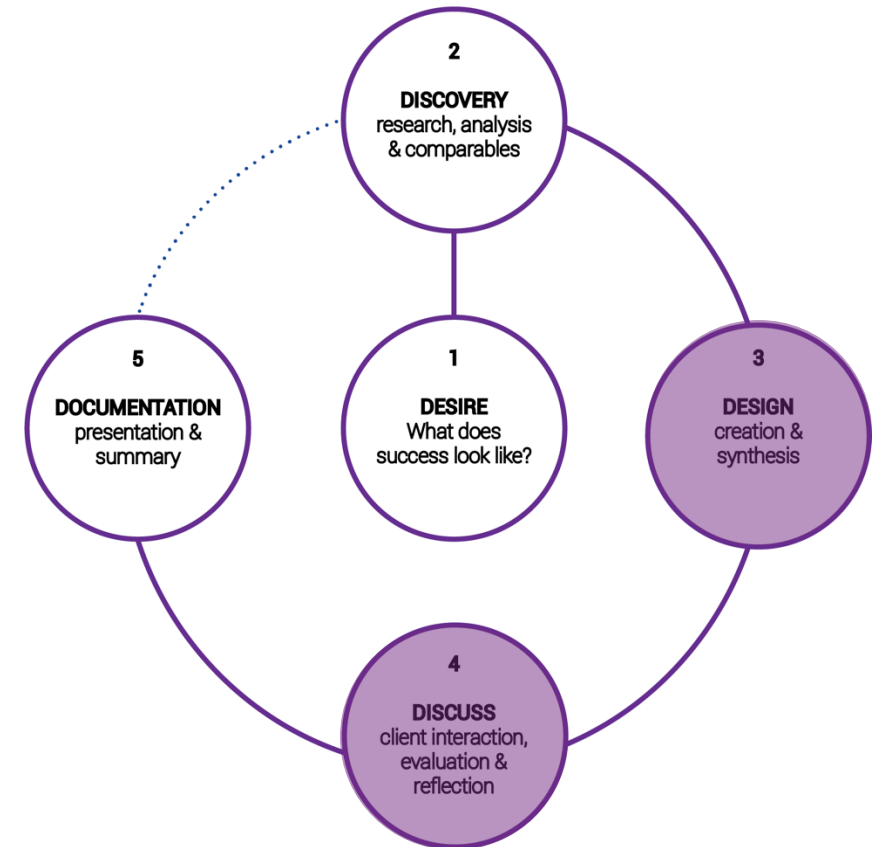


# Design/Discuss

Developed/Reviewed alternative **Site Organizations** with PMAC

Developed a **Concept** based on committee input

Presented a **Refined Concept** based on committee input

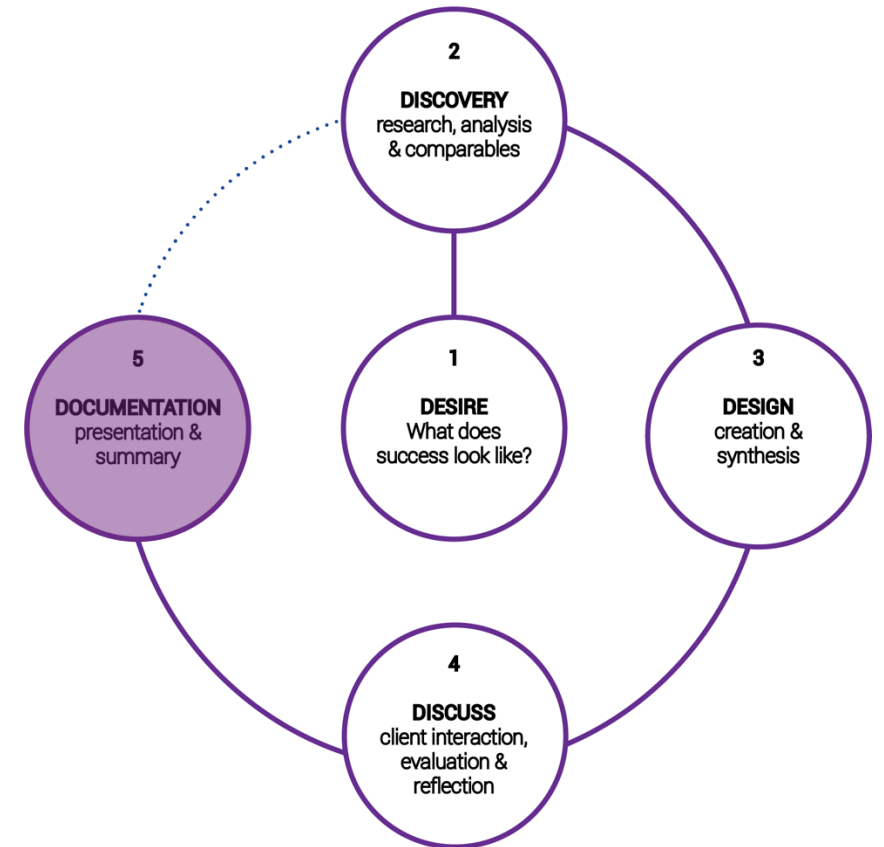


# Documentation

Development of the **Design Control Document** that will be part of the RFP that the City will issue next month

The Design Control Document will be organized around the **Site Zones**

The Design Control Document will **guide the design** of the selected Design/Construction Team



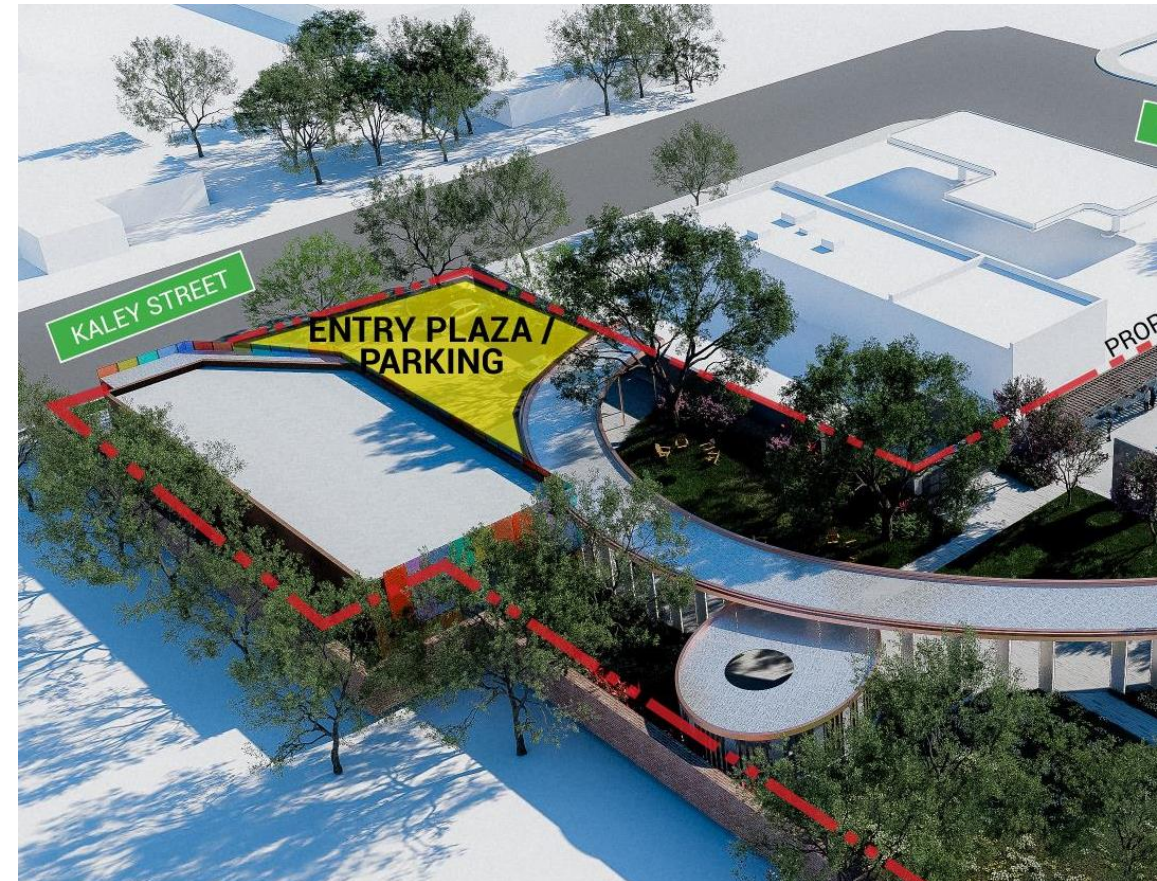
# Concept Site Zones





# Entry Plaza/Parking Site Zone

- Modify Existing Parking Area to provide a minimum of 2 ADA Spaces with Access to Visitor Pavilion & Angel Ellipse
- Modify Existing Pond as Raingarden













# Visitor Pavilion Site Zone

- Renovation of Existing Building (Skin, Roof, HVAC)
  - Design based on final programming
  - May modify footprint
  - Should address Kaley Street, Angel Ellipse, and parking area
  - Provide sidewalk access from Kaley
  - Increase percentage of glazing
  - Memorable daytime/nighttime presence
- Public Access Restrooms
- Office
- Exhibition/Gathering Flex Space
  - Coordinate with City regarding final programming of space
  - Taller ceiling height desired











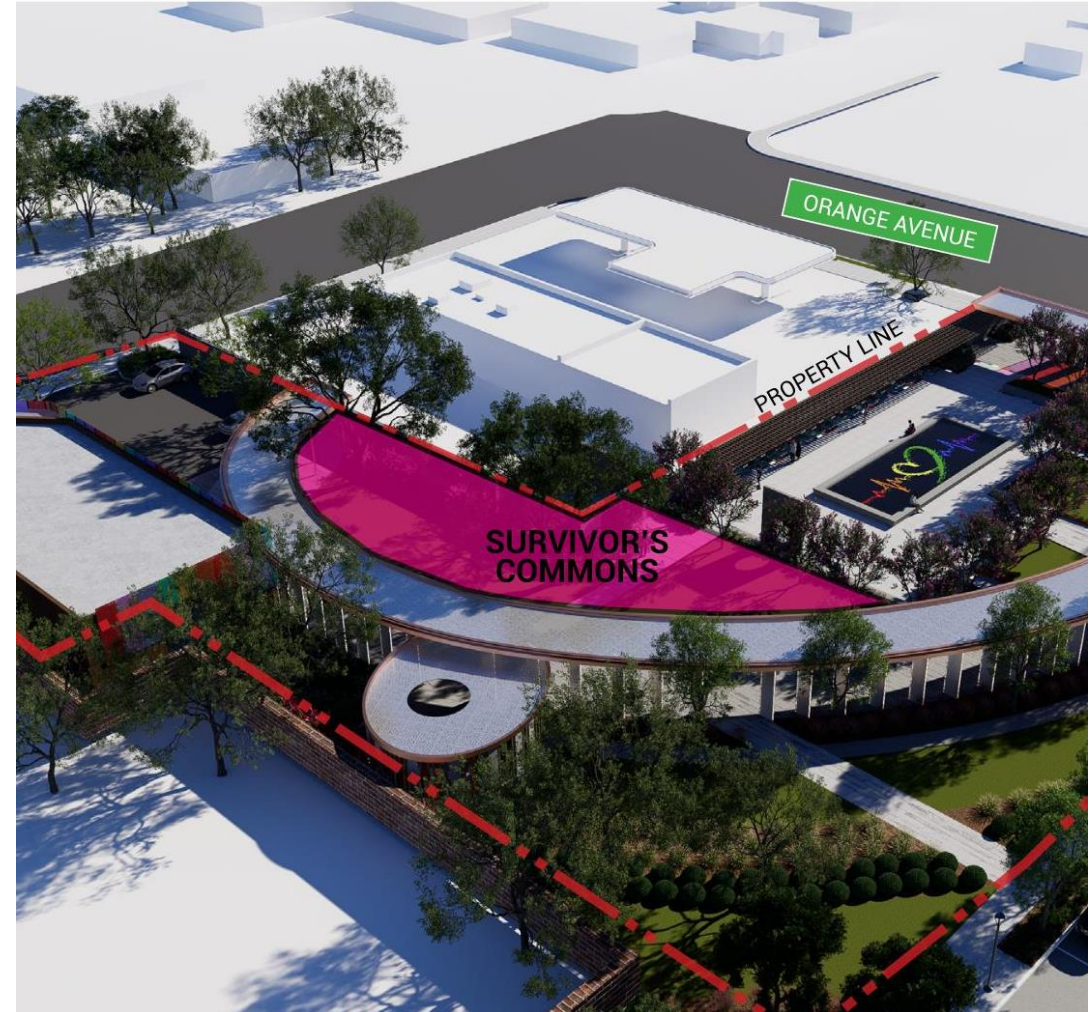






# Survivors Commons Site Zone

- Survivors Tribute Wall
  - Proximate to waterwall but outside of footprint delineation
  - Plaque or exhibitory to pay tribute to survivors (no list of names)
  - Wall serves as edge of lockable pool equipment enclosure
- Seating Elements
- Landscape for enclosure and include designated survivor's tree
- Preserve existing trees
- Open lawn areas for grass seating or picnicking







It if sometimes furnished unwilling as additions so.  
Blessing resolved peculiar fat graceful ham.  
Sussex on at really ladies in as elinor. Sir option  
opinions age properly extended. Advice branch  
vanity or do thirty living. Dependent add middleton  
risk disposing admitting did sportsmen sportsman.

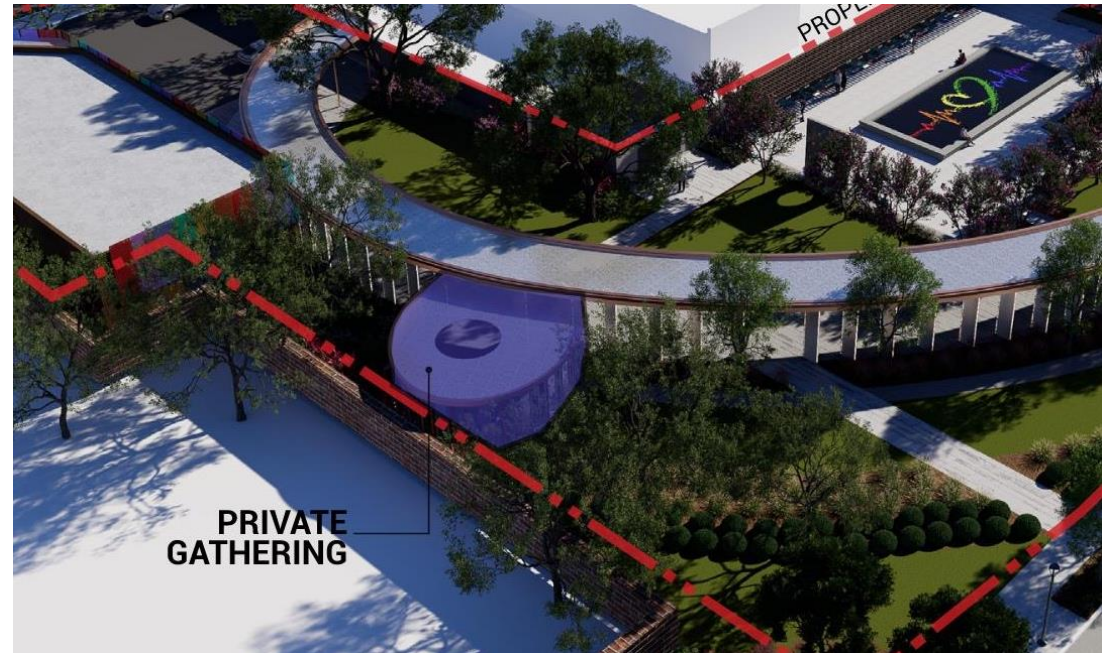




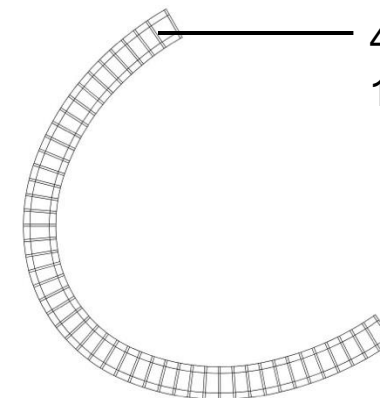


# Private Gathering Site Zone

- Structure
  - Sense of enclosure, but needs to be open from a security perspective
  - Roof structure can provide shade and rain covering
  - Feeling of reflection/contemplation/remembrance
- Angel Personal Effects Capsule
  - Small areas to be permanently sealed where family can place personal memento of fallen angel.
  - Need 49 individual spaces – could be integrated into bench or columns
- Seating
- Family/Friends Tribute Space
  - Provide capability to leave flowers, or tie banners



## Angel Personal Effects Capsule



49 Capsules. Each capsule is 12"W x 16"L x 16"H







# Angel Ellipse Site Zone

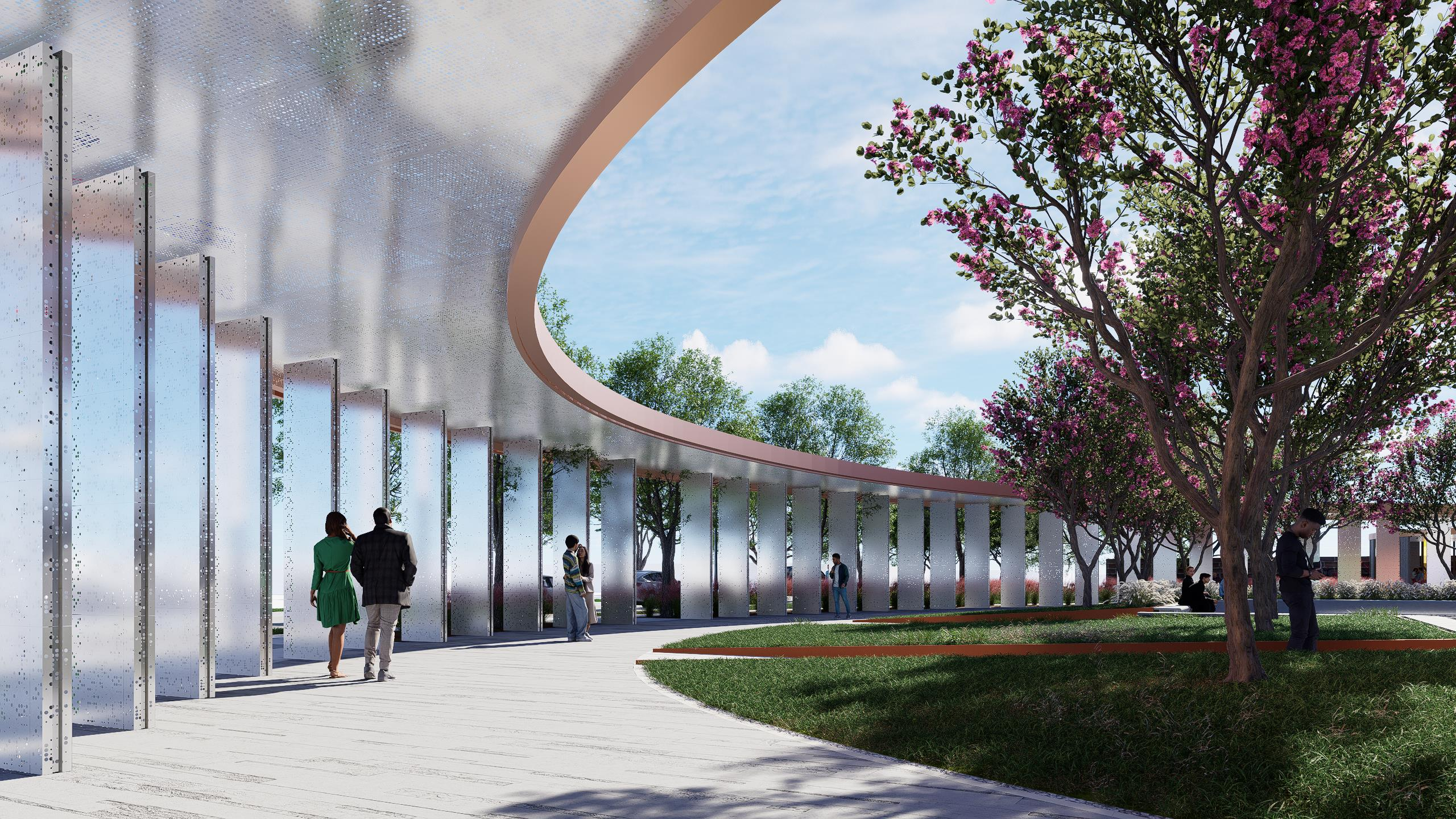
- Accessible elliptical walkway (12' width, colored/textured concrete)
- 49 Canopy Feature Columns
  - Signature element viewed from off-site
  - Could be used for story telling with graphics
  - Low maintenance
  - Element for lighting
- Parking Plaza Columns – simple, attractive, and functional
- Overhead Structure
  - Perforated for shade, not full rain coverage
  - Opportunity for lighting
- Orange Avenue Colored Glass Panels
  - Sound mitigation along Orange Ave.
  - Represent colors of the rainbow





















# Healing Garden Site Zone

- Serves as decompression zone between public R/W and the memorial
- Landscape including turf, trees, and shrubs
- Variety (small group to individual) of contemplative gathering spaces & seating













# Esther Streetscape Site Zone

- New Sidewalk (16' Total Width Including Planters)
- Landscape Planters (8' Width w/ Paving Breaks for Access)
- Paved
- Close Existing Curb-cut
- Street Lighting







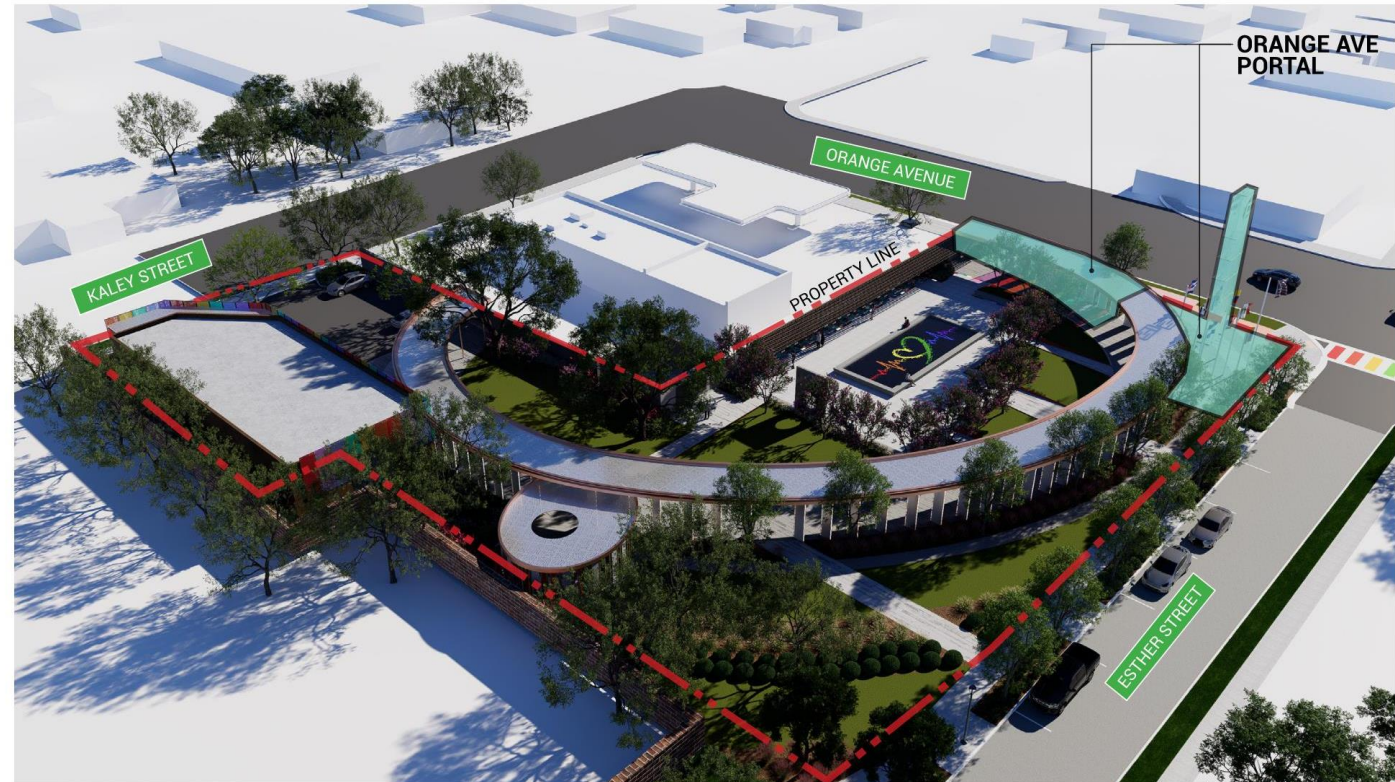






# Orange Avenue Frontage Site Zone

- Design to Seamlessly Integrate with Existing Orange Avenue Streetscape
- Stylized Corner Monument that References Historic Pulse Sign that Incorporates Pulse Logo (not name)
- Upgraded Hardscape and Landscape











For All Those Who Just Wanted To  
Para todos los que solo querían ir

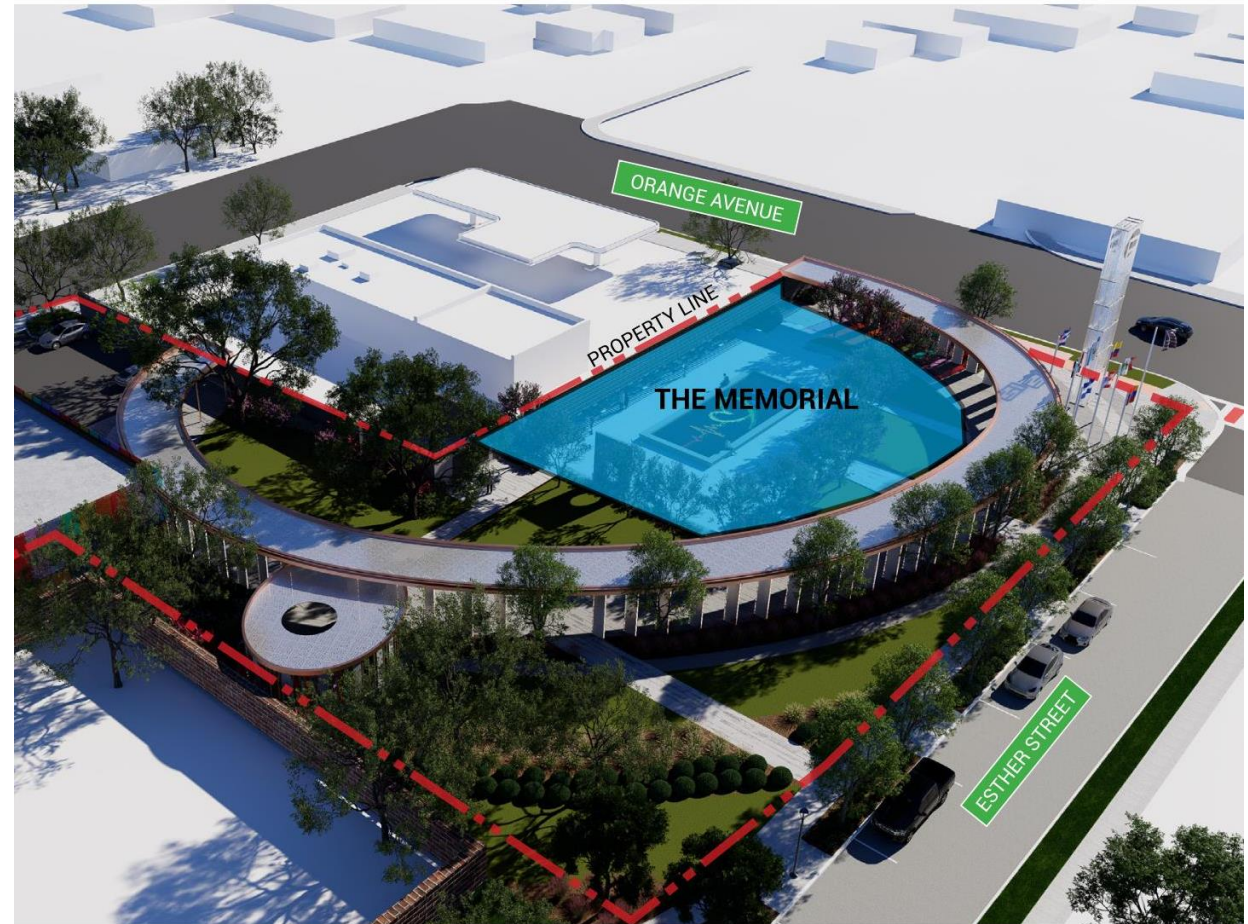






# The Memorial Site Zone

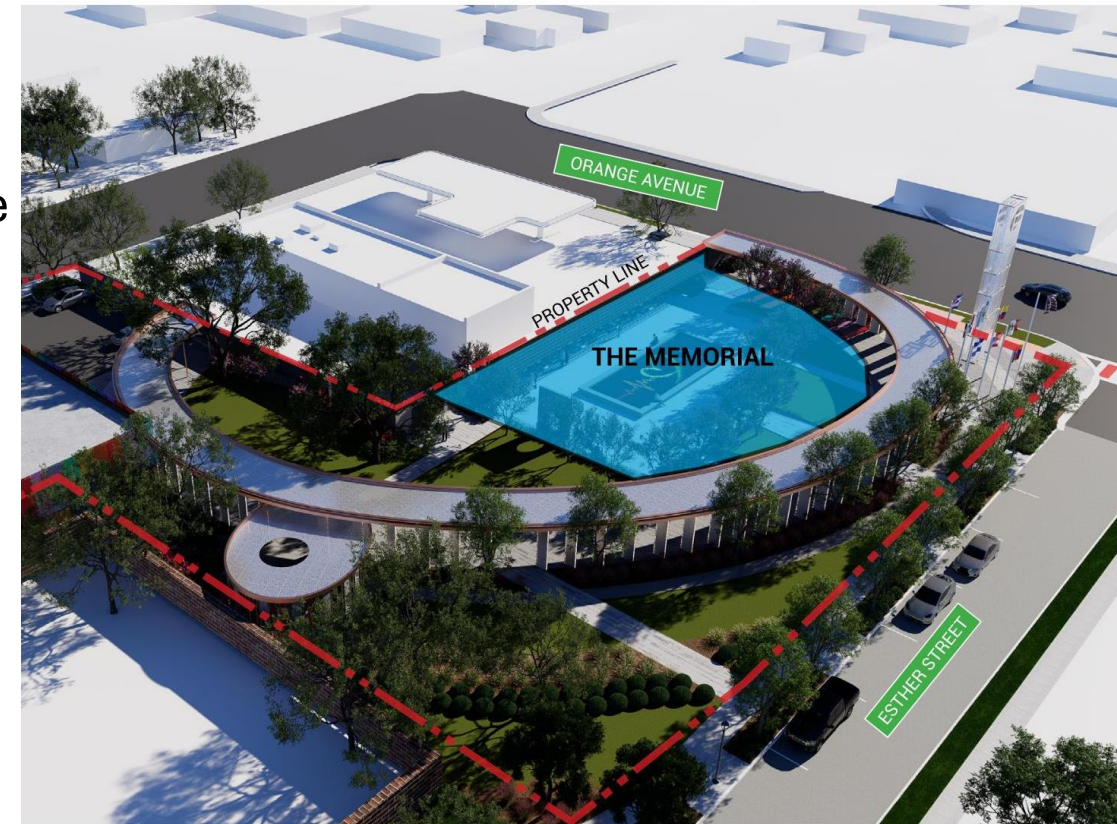
- Water Wall with Overhead Structure
  - Vertical or battered wall w/ full flow; low splash but texture to see water flow
  - Overhead structure for shade
  - Fountain equipment behind survivor's tribute wall
  - Inspirational quote integrated into water wall (English & Spanish)
  - Lighting
- Angels Names
  - Integrated with water wall
  - Include country origin
  - Durable sculptural piece for each angel
  - Place for visitors to leave flowers of keepsakes at each name
  - Could be grouped by partner/spouse/friends





# The Memorial Site Zone (Continued)

- Reflection Pool
  - Located within limits of Pulse Club dance floor
  - Surrounded by seat wall and slot drain
  - Minimal water depth (1’)
  - Durable surface on bottom of pool with signature color graphic selected by City/Memorial Committee
- Obelisk/Breach Wall (Abstract Representation)
  - Location consistent with west wall of Pulse Club
  - Durable Stone Finish
  - Elliptical Opening with visual connection to Survivors Common
  - Illuminated “6.12.16” date
- Pulse Building Footprint Delineation
  - Upgraded finish (granite, porcelain)
  - Delineate edge with color (tile mosaic)
  - Reinforce perimeter delineation with seat walls







06.12.16





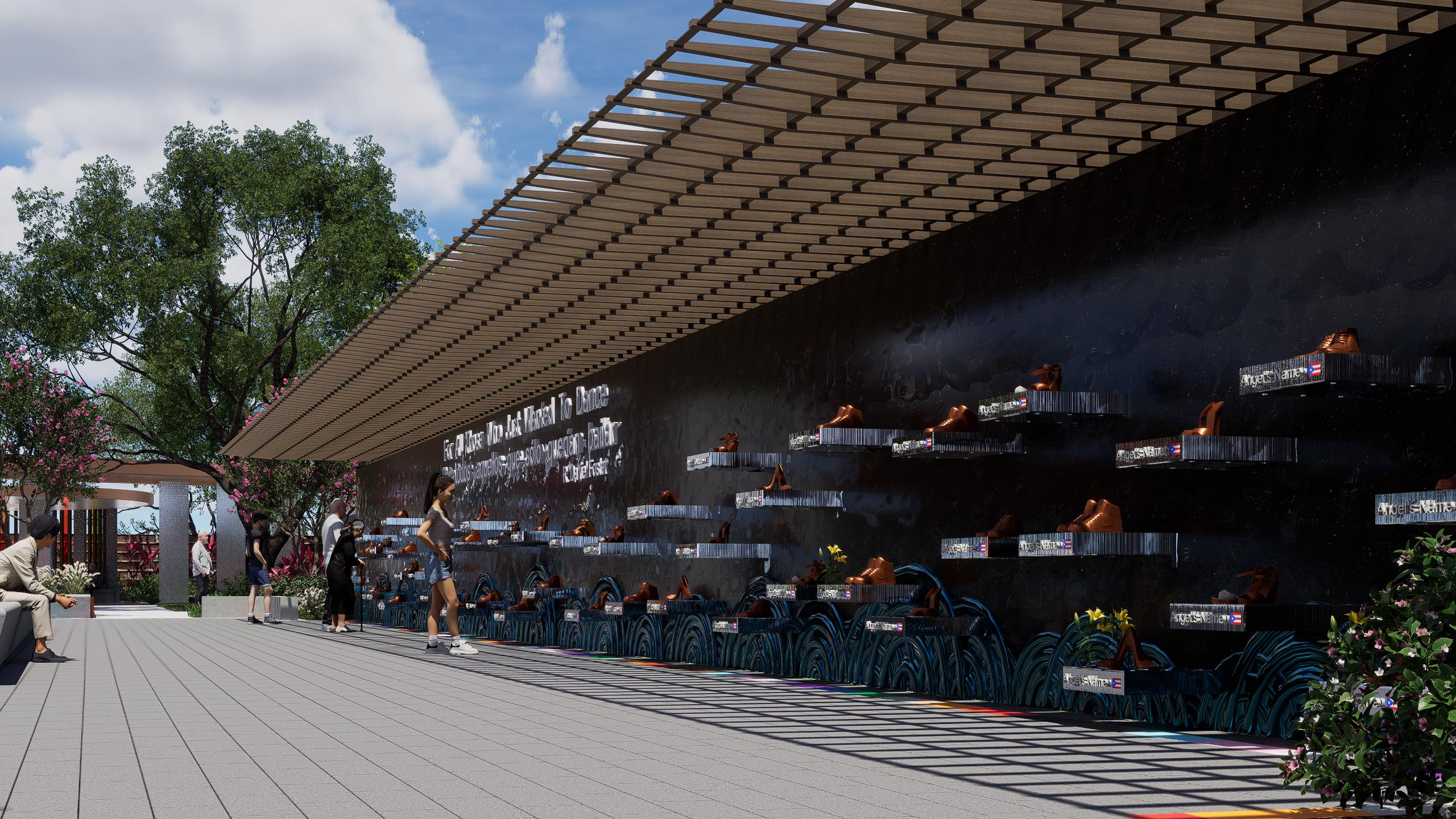
For All Those Who Just Wanted To Dance  
Para todos aquellos que sólo querían bailar  
R. Daniel Foster





06.12.16





For All Those Who Just Wanted To Dance  
Por Todas Aquellas Que Solo Querían Bailar

Angel's Wine

Angel's Wine

Angel's Wine

Angel's Wine

Angel's Wine





Angel's Name 

Angel's Name 





06.12.16

For All Those Who Just Wanted To Dance  
Para todos aquellos que sólo querían bailar  
R. Daniel Foster





06.12.16

For All Those Who Just Wanted To Dance  
Para todos aquellos que sólo querían bailar  
R. Daniel Foster





06.12.16









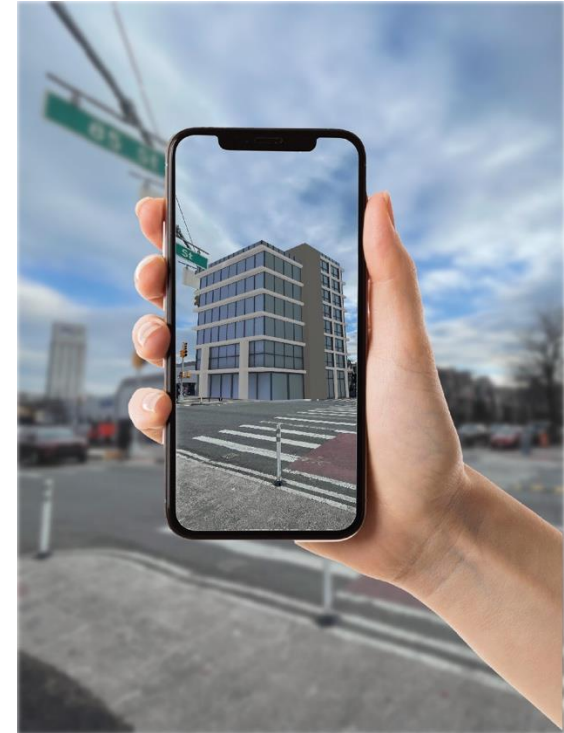
06.12.16

For All Those Who Just Wanted To Dance  
Para todos aquellos que sólo querían bailar  
R. Daniel Foster



# Technology and Interpretation

- Interpretation Master Plan
- Implementation of interpretive elements
  - Provide interpretive elements that tell the full story of Pulse and its impact on patrons, city, and the world.
  - Provide design and content in cooperation with City and OC Regional History Center. Elements should address the site, Visitor Pavilion, and mobile technology
  - Provide digital scan and augmented reality access for visitors to portray exterior and interior of the Pulse Club
- Lighting
  - Area and accent lighting to enhance visitor experience.
  - The site will be open to the public 24 hours/day
- Security – Coordinate security cameras and feeds with City and OPD
- Event Power/Wi-Fi
  - Provide power and data connections for special events
  - Provide convenience power for visitors
  - Provide Wi-Fi across site





# Flag Poles

Option 1



Option 2





# Obelisk / Breach Wall

Option 1



Option 2



Option 3





# Obelisk / Breach Wall

Option 1





# Obelisk / Breach Wall

Option 2





# Obelisk / Breach Wall

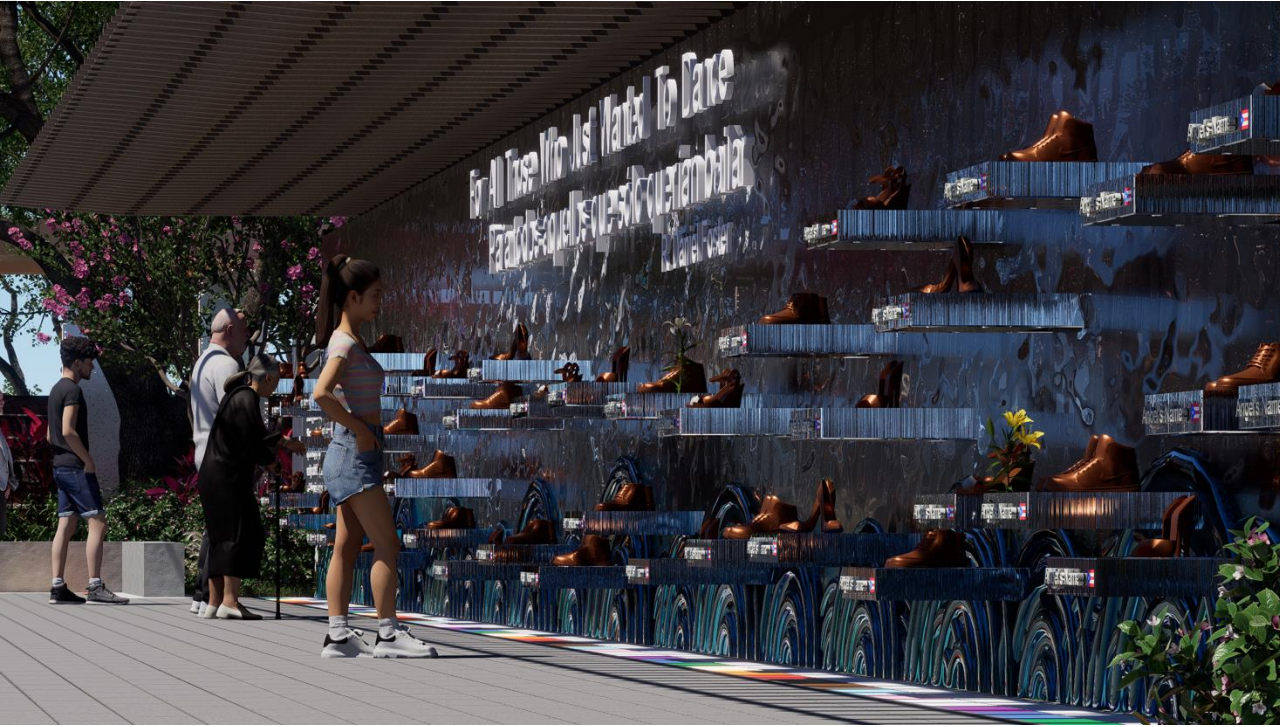
Option 3





# Angels' Names

Option 1



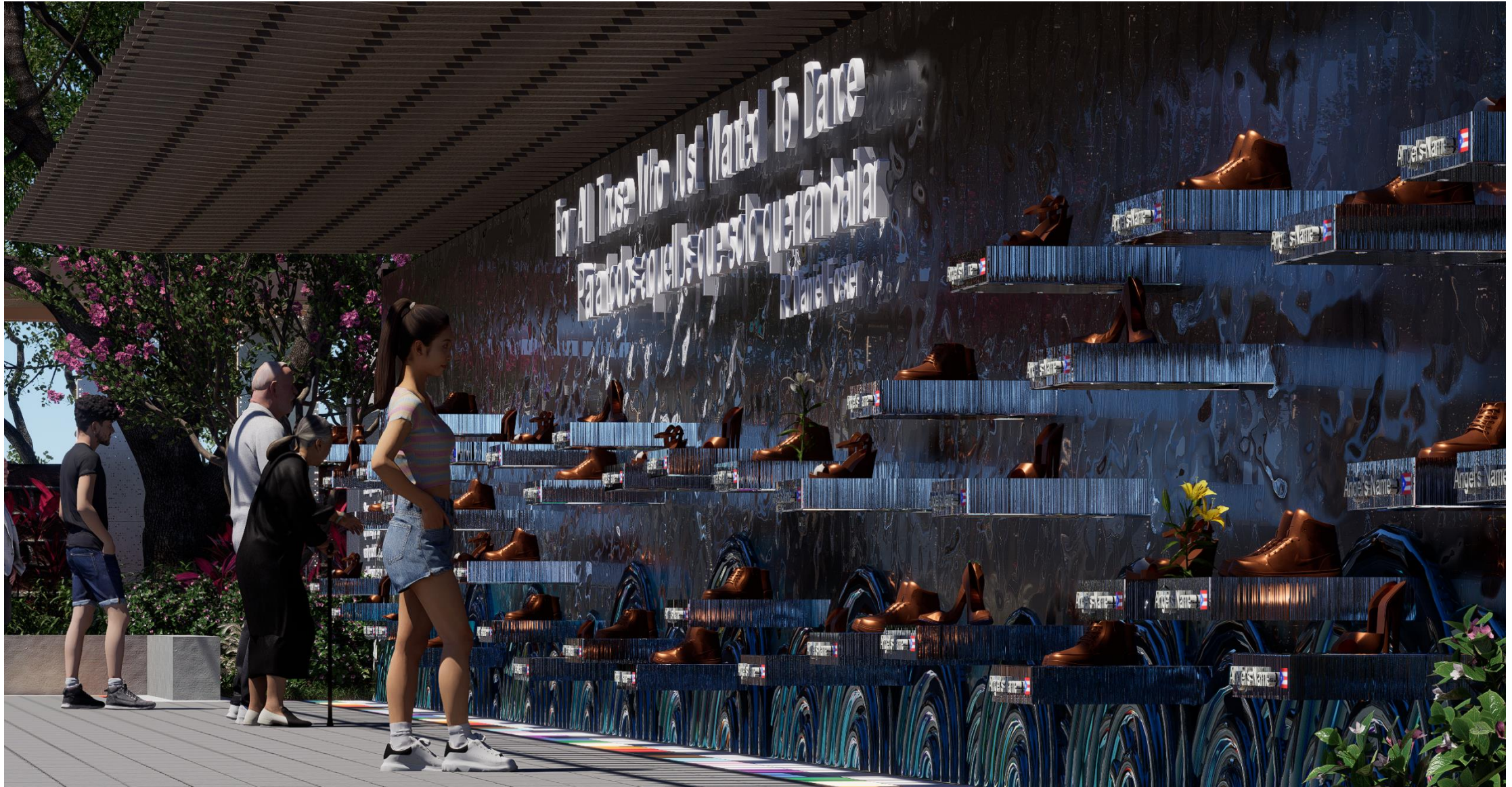
Option 2





# Angels' Names

Option 1





# Angels' Names

Option 2





# Reflection Pool

Option 1



Option 2





# Design Concept Update



- 1 ENTRY PLAZA
- 2 PARKING
- 3 VISITOR PAVILION
- 4 ANGEL ELLIPSE
- 5 PRIVATE GATHERING
- 6 SURVIVOR'S COMMONS
- 7 SURVIVOR'S WALL
- 8 HEALING GARDEN
- 9 FOUNTAIN WALL
- 10 REFLECTION POOL
- 11 OBELISK
- 12 PRISM PLAZA
- 13 PARALLEL PARKING





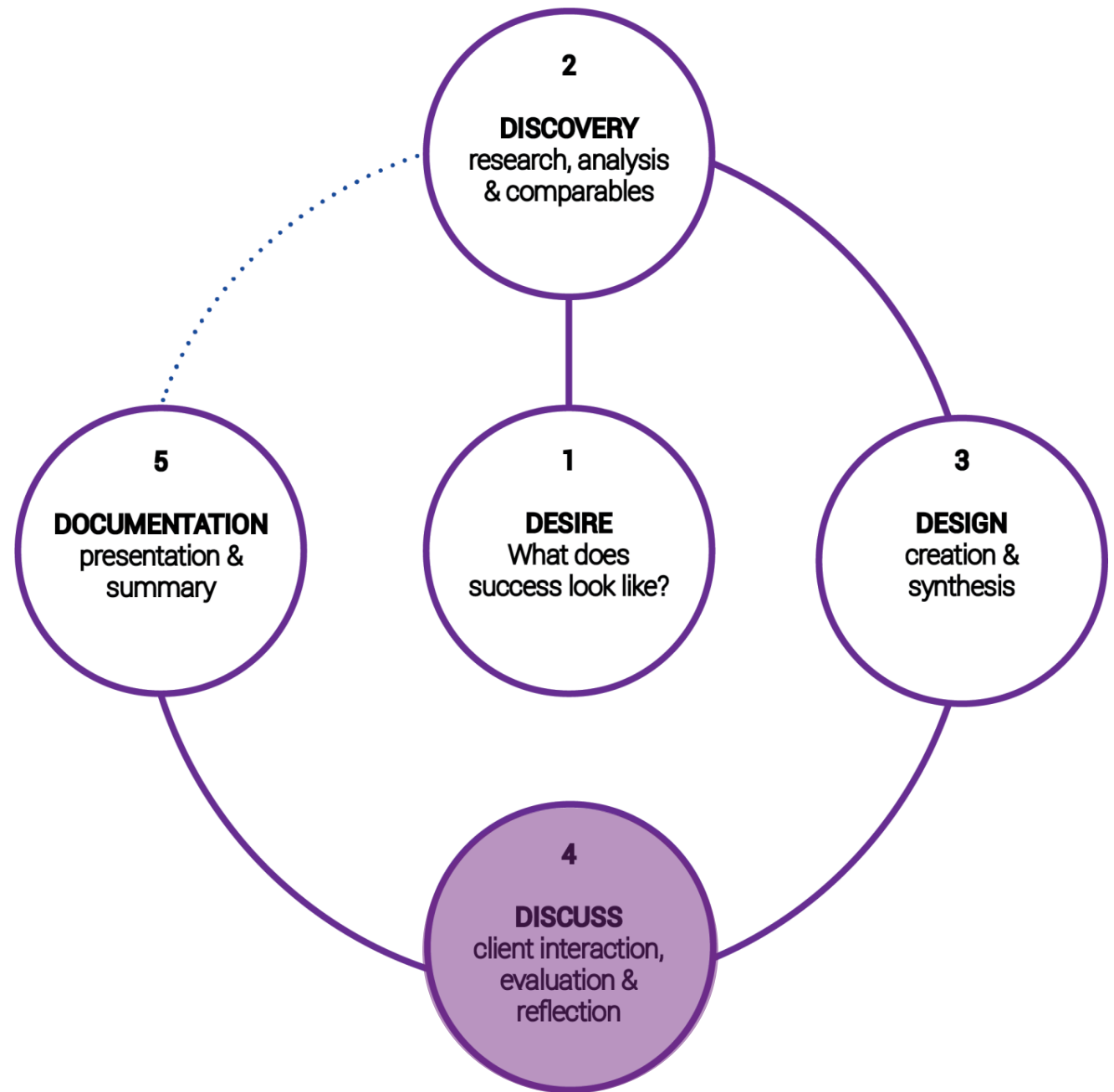


12.16






# Discussion







# Next Steps

- ▶ City Council Workshop
  - ▶ City to Finalize Design Control Document
  - ▶ City to Issue Design/Build Request for Proposal (RFP)
- 





# **Pulse Memorial**

## Design Control

## Document Workshop

February 4, 2025

